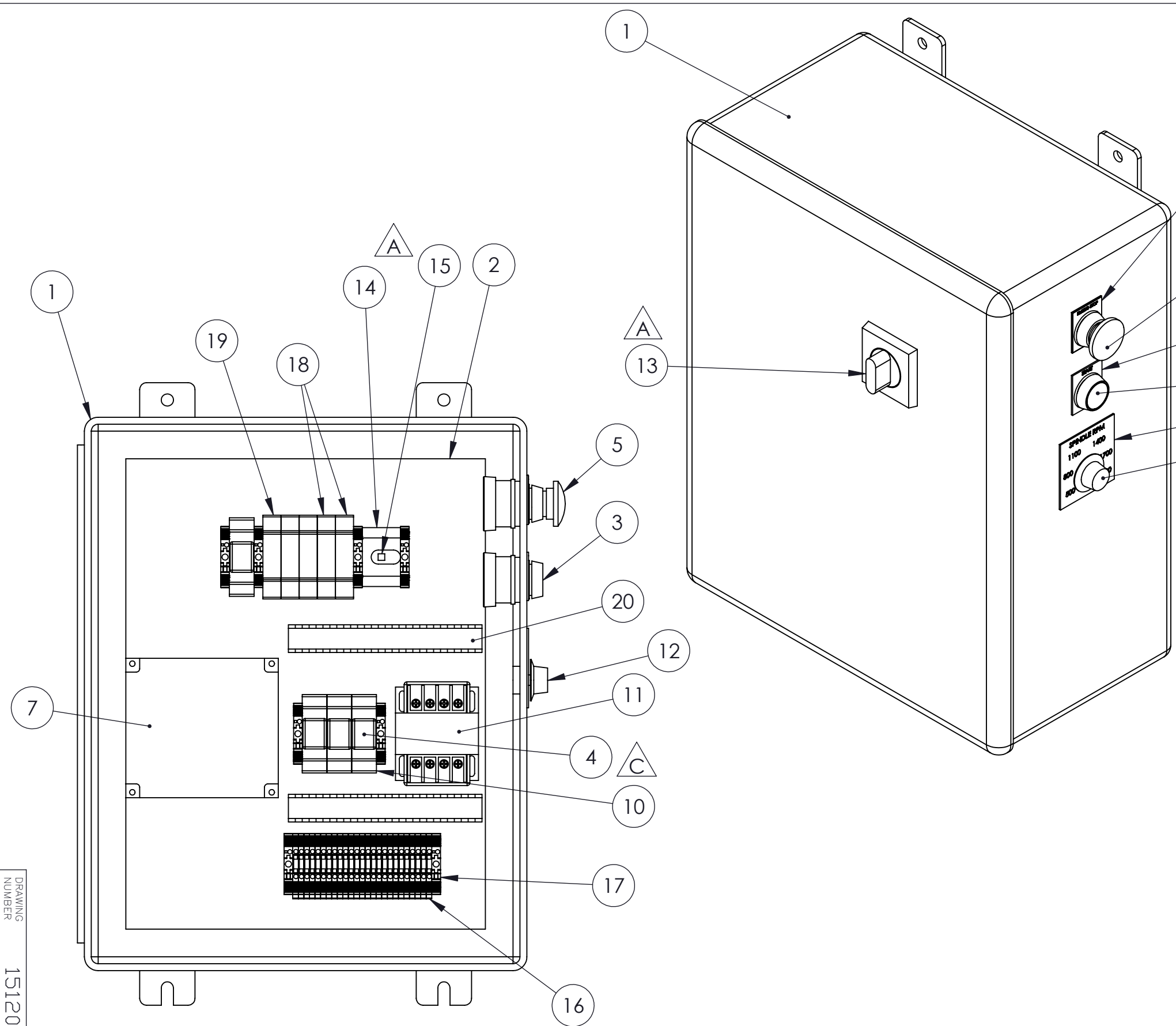


REVISIONS			
REV.	DESCRIPTION	DRAWN BY	DATE
A	UPDATED DISCONNECT SWITCH	JC	12/26/2013
B	UPDATED EMERGENCY STOP LEGEND PLATE TO CURRENT (YELLOW)	JC	4/23/2015
C	CORRECTED NUMBER OF RELAYS AND LAYOUT	EJL	6/8/2015



ITEM NO.	PART NUMBER	DESCRIPTION	open/QTY.
1	12364	ELECTRICAL CABINET	1
2	M10776	SUB-PANEL, 20" x 16"	1
3	M10004	30mm PUSH BUTTON, GREEN, FLUSH	1
4	M10006	RELAY, 120VAC	4
5	M10123	30mm, MUSHROOM HEAD, PUSH/PULL, RED	1
6	16317	LEGEND PLATE, EMERG STOP, YELLOW	1
7	M11503	FREQUENCY DRIVE, WJ200-040HF	1
8	M10775	LEGEND PLATE, START	1
9	12091	LEGEND PLATE, SPINDLE RPM	1
10	M10672	RELAY SOCKET	4
11	M10014	POWER TRANSFORMER	1
12	M10778	POTENTIOMETER	1
13	M11126	HANDLE, DISCONNECT	1
14	M11125	SWITCH, DISCONNECT	1
15	M11064	SHAFT, DISCONNECT	1
16	M11981	TERMINAL BLOCK	25
17	M11982	END BLOCK	8
18	M12015	FUSE HOLDER, SINGLE POLE, CC CLASS	2
19	M12016	FUSE HOLDER, 3 POLE, CC CLASS	1
20	7in Panduit	-	2

Tolerance unless noted
 .000 ±.005
 .00 ±.01
 Fract ±1/16

Manufacturing Solutions, Inc.
 9485 College St, Beaumont, Texas

Assembly Title
ELECTRIC BOX, WJ-SERIES FREQ. DRIVE
C3A, 440VAC, 5HP

DRAWING NUMBER
 15120
 REV C

DOOR REMOVED FOR CLARITY

THIS PRINT IS THE PROPERTY OF MANUFACTURING SOLUTIONS, INC. THE INFORMATION CONTAINED HEREIN IS CONFIDENTIAL AND MAY NOT BE USED, DIVULGED, COPIED, NOR REPRODUCED WITHOUT THE EXPRESS WRITTEN PERMISSION OF MANUFACTURING SOLUTIONS, INC.

DRAWING SIZE B	SCALE 1:4	SHEET 1 of 1	DO NOT SCALE DRAWING	ALL DIMENSIONS IN INCHES
DRAWN BY JC	APPR BY	DATE 6/25/12	DRAWING NUMBER 15120	REV C